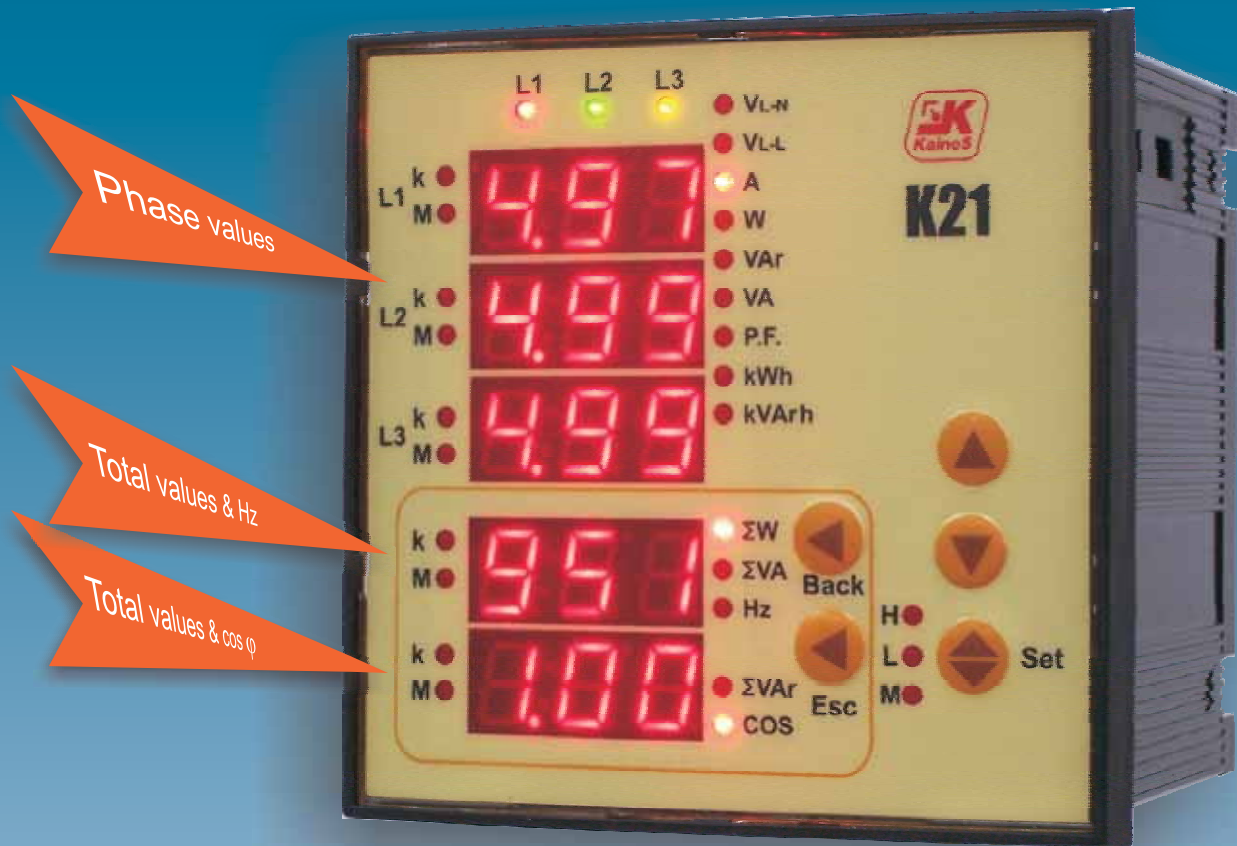


NEW

MULTIFUNCTIONAL POWER MONITOR



- ✓ Easy reading with **5** separate **displays**.
- ✓ **TRMS** measuring.
- ✓ Galvanic Isolation.
- ✓ Panel mounting, 96 x 96 mm.

Easy and economic



TECHNICAL DATA

Input voltage	10...300 V AC, 50-60 Hz (L-N) 10...500 V AC, 50-60 Hz (L-L)
Input current	0,05 ... 5,5 A
Aux. Power supply	190-260 V AC, 50-60 Hz
Aux. Power supply power consumption	< 4 VA
Measuring input power consumption	< 1 VA
Class	1 \pm 1 digit
Voltage Transformer Ratio	1 ... 2000
Current Transformer Ratio	1 ... 2000
Operating temperature	-5 °C ... +50 °C
Display	Red LED
Electric Protection	Double insulation – Class II
Box Protection	IP40, frontal panel
Box Material	Non flammable
Installation	Panel mounted
Installation Category	Class III
Wire Thickness (terminal block)	2,5 mm ²
Dimensions	96 x 96 x 80 mm
Weight	0,45 kg