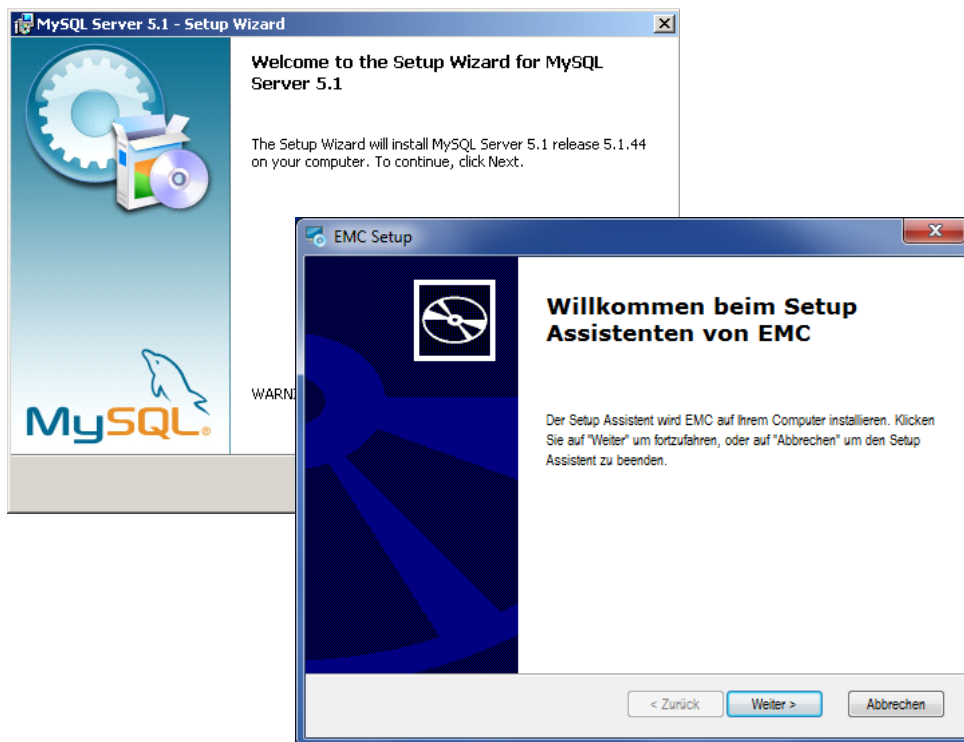


MySQL and EMC

Installation of Database and EMC Software

3-349-740-03
1/8.13



| Content | Page |
|--|------|
| 1 Application | 2 |
| 2 System Requirements | 2 |
| 3 Installation of MySQL Software | 2 |
| 4 Installation of EMC Software | 6 |
| 5 Product Support | 7 |

3 Installation of MySQL Software

The EMC software is based on a MySQL database.

- ⇒ Please download the installation files for MySQL server 5.1 version 5.1.44. A link for downloading the installation files is given [here](#).

The zip file, once downloaded, must be unzipped into a directory. The setup file will then be available in this directory.

Step 1

- ⇒ The installation routine is started by double-clicking on setup.

The following installation window pops up.



- ⇒ Click „Next“.

Step 2



- ⇒ Select option „Typical“ and click „Next“.

1 Application

As a prerequisite for installing and using the Energy Management Control Software (EMC) you have to install the MySQL database first.

2 System Requirements

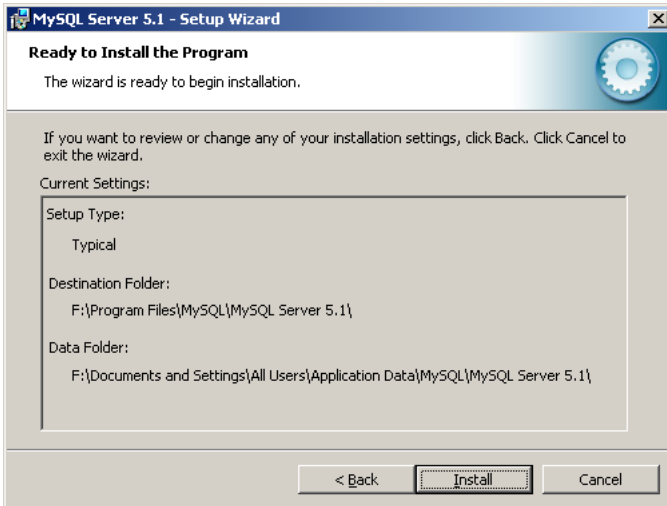
PC Hardware

- Dual Core or higher-grade processor
- RAM with a minimum of 2 GB
- Hard disk with at least 10 GB of free storage capacity
- VGA monitor with a resolution of at least 1024 x 768 pixels
- Input equipment (mouse/keyboard)
- Printer, if required
- USB interface

Operating System / Software

- Microsoft Windows 7 (32 bit or 64 bit)
- Internet Explorer 8 or 9
- j2sdk 1.6.0 or higher
- MySQL 5.1.44

Step 3



⇒ Click „Install“.

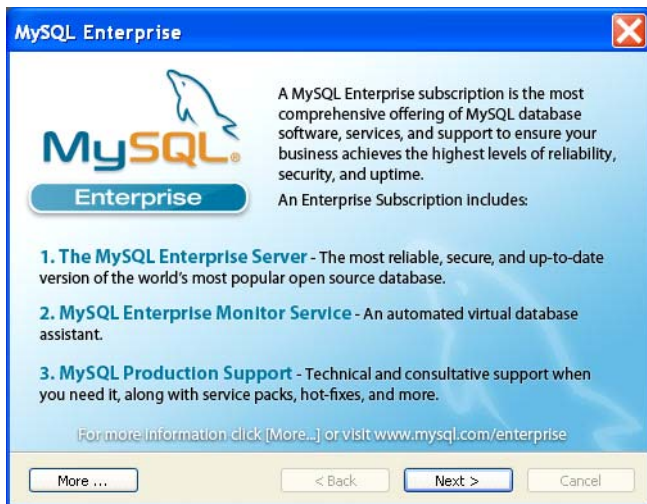
Step 5



⇒ Activate field „Configure the MySQL Server now“ and click „Finish“.

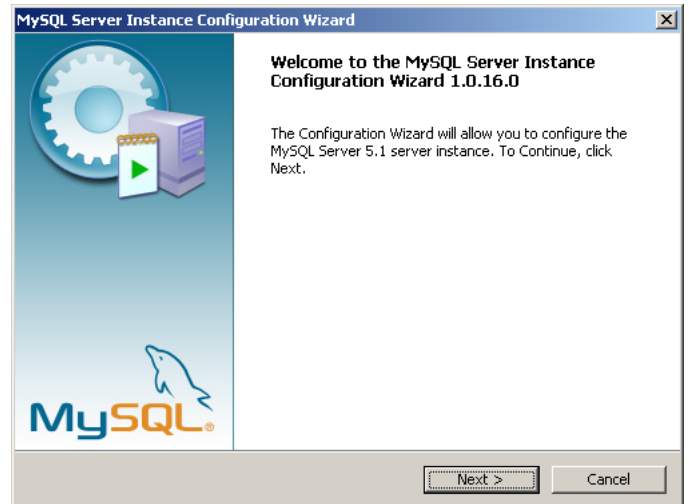
This process will launch a new installation wizard.

Step 4a



⇒ Click „Next“.

Step 6



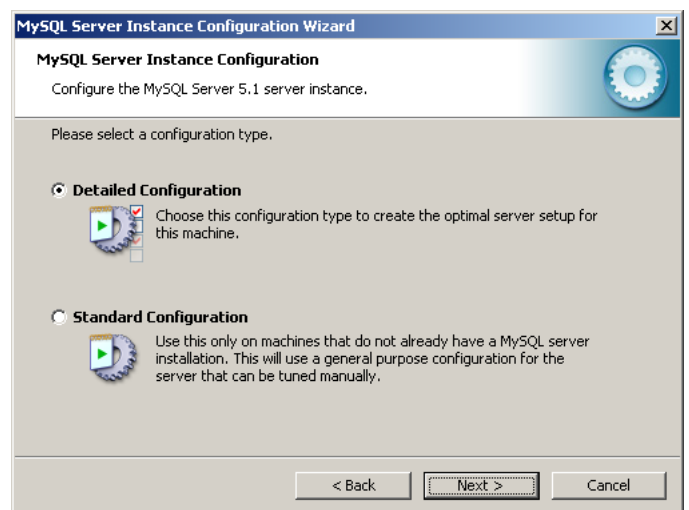
⇒ Click „Next“.

Step 4b



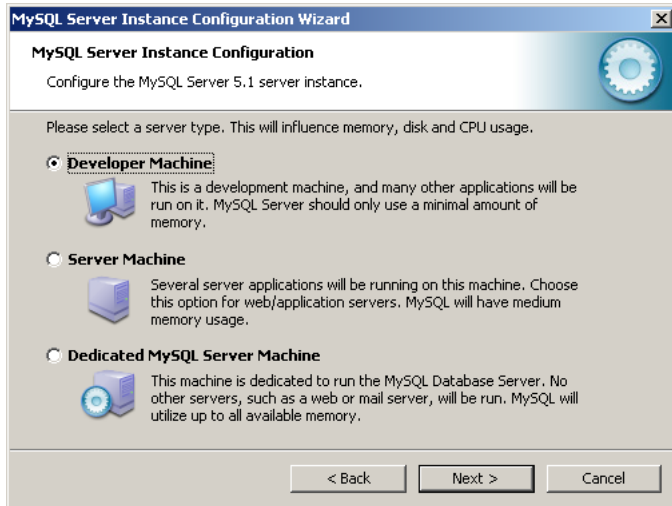
⇒ Click „Next“.

Step 7



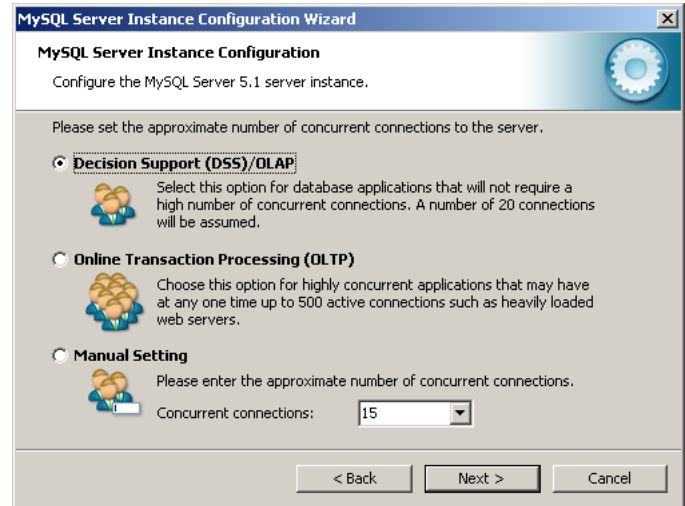
⇒ Select option „Detailed Configuration“ and click „Next“.

Step 8



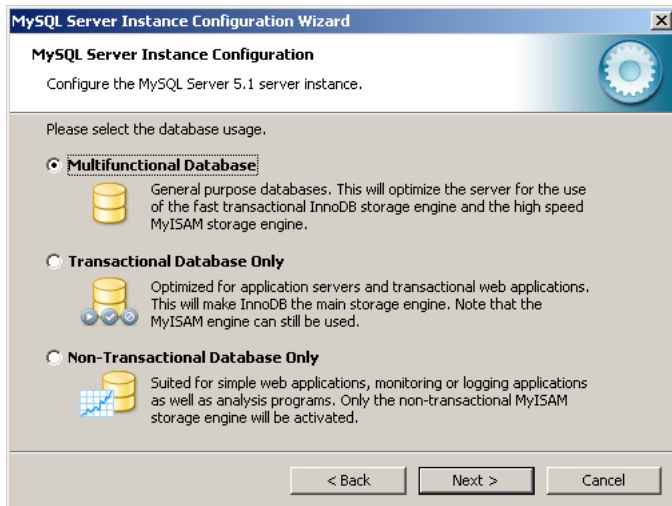
- Select option „Developer Machine“ and click „Next“.

Step 11



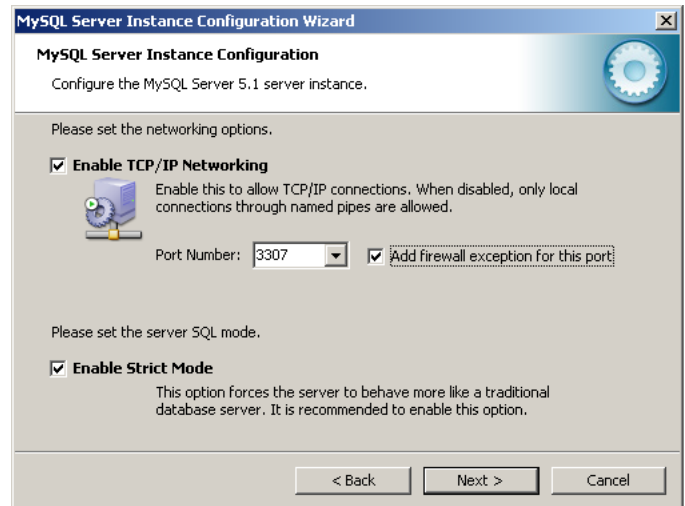
- Select option „Decision Support (DSS)/OLAP“ and click „Next“.

Step 9



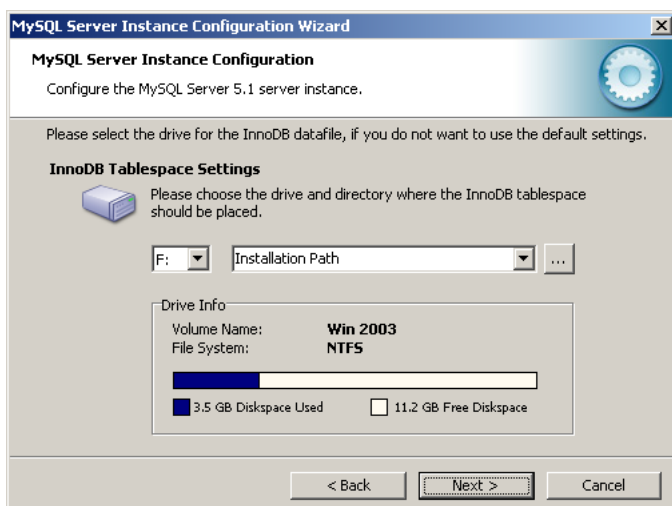
- Select option „Multifunctional Database“ and click „Next“.

Step 12



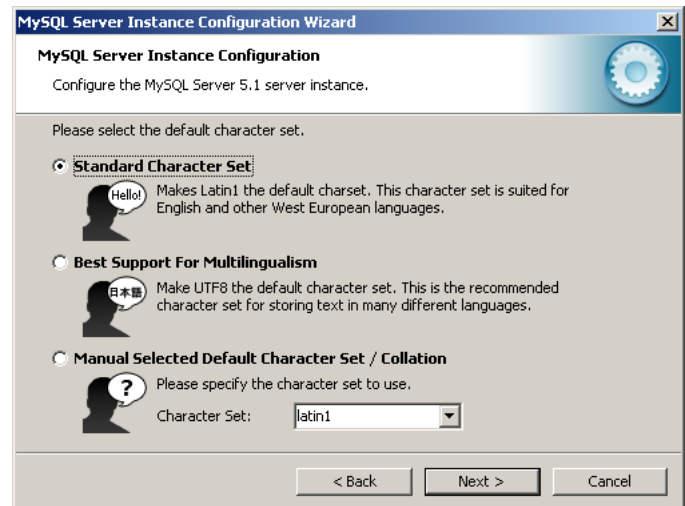
- Select options „Enable TCP/IP Networking“, „Add firewall exception for this port“ and „Enable Strict Mode“.
- Set the pulldown menu „Port Number“ at the value 3307.
- Click „Next“.

Step 10



- Select the requested installation path and click „Next“.

Step 13



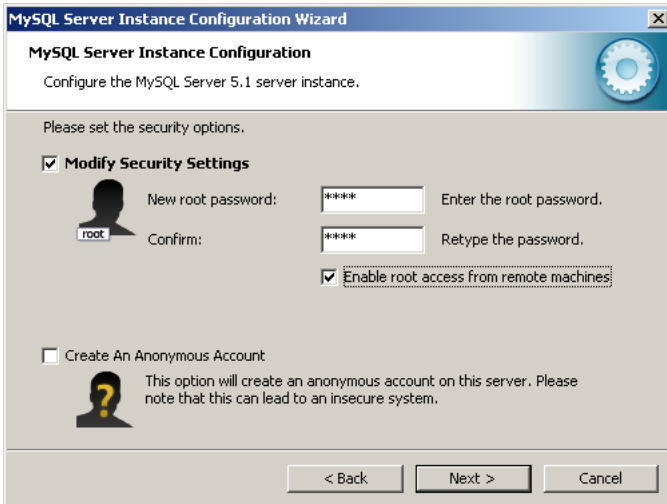
- Select option „Standard Character Set“ and click „Next“.

Step 14



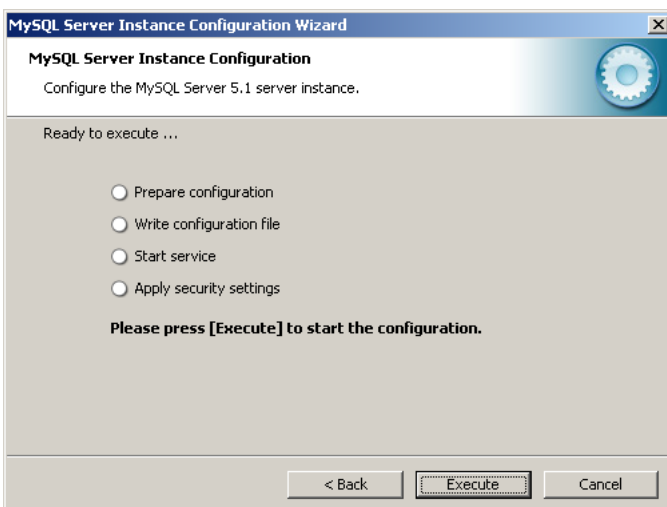
- ⇒ Activate all options and click "Next".

Step 15



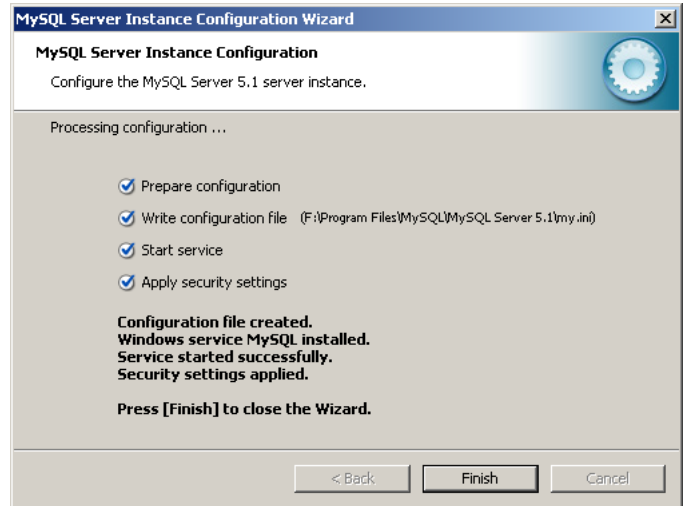
- ⇒ Select option „Modify Security Settings“, „Enable root access from remote machines“, enter „root“ as password and click „Next“.

Step 16



- ⇒ Click „Execute“.

Step 17



- ⇒ Click „Finish“.

The rest of the installation process is performed automatically.

Step 18

- ⇒ After the installation of the MySQL database has been completed, shut down your computer and restart it afterwards.

4 Installation of EMC Software

Step 19

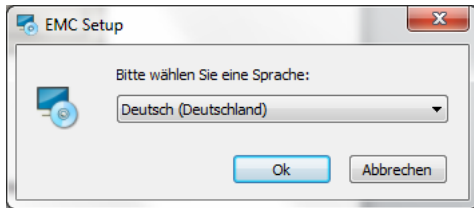
- ⇒ For installing the EMC software, unzip the zip file on the enclosed CD ROM and follow the instructions below.

Step 20

- ⇒ Start the setup wizard of the EMC software by double-clicking on the exe file.

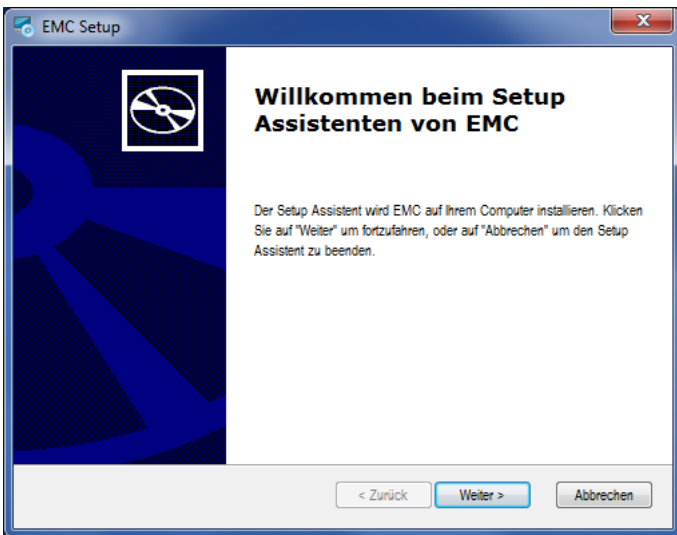
EMC_Startup_Application_Installer_v5.0.0...

Step 21



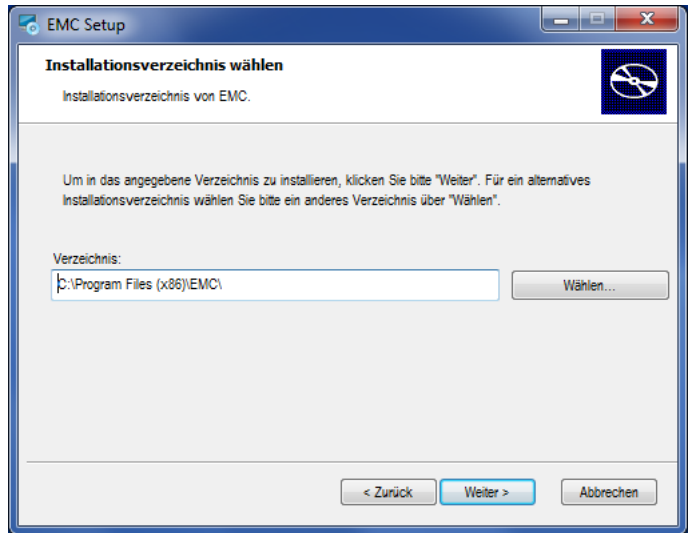
- ⇒ Confirm the settings in the EMC setup dialogue for your respective language by clicking „OK“.

Step 22



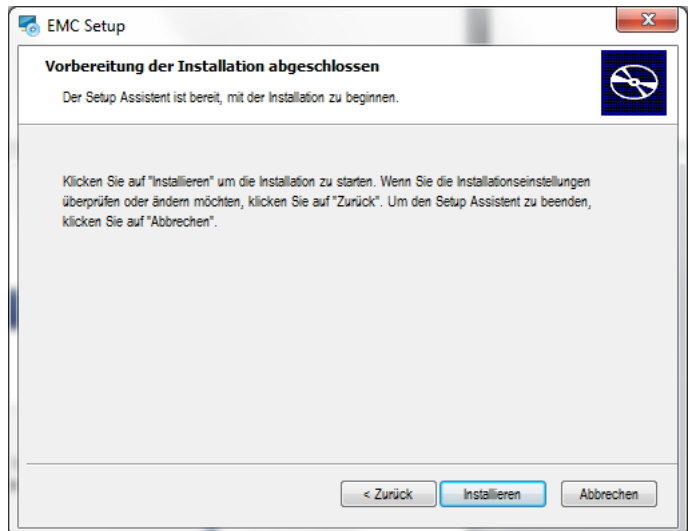
- ⇒ Click „Weiter“ (Continue), to install the setup wizard of the EMC software.

Step 23



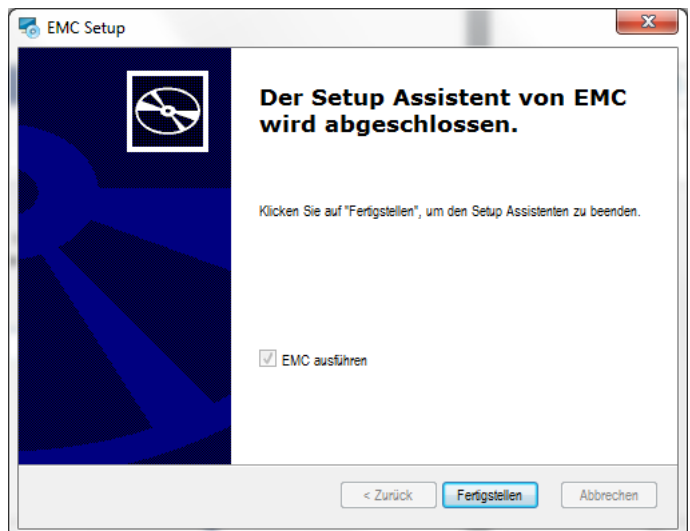
- ⇒ Select the requested file path and confirm by clicking „Weiter“ (Continue).

Step 24



- ⇒ Click the „Installieren“ (Install) button to launch the installation of the EMC software.

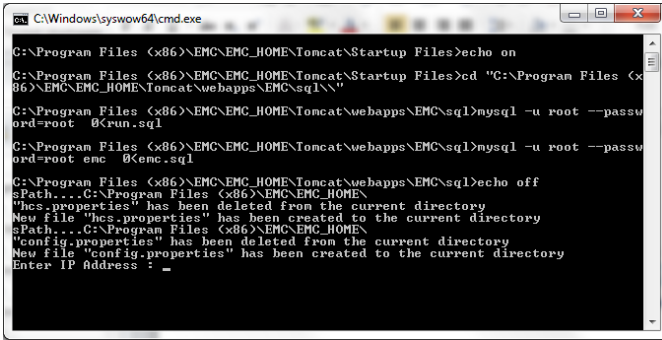
Step 25



- ⇒ Click on „Fertigstellen“ (Finish).

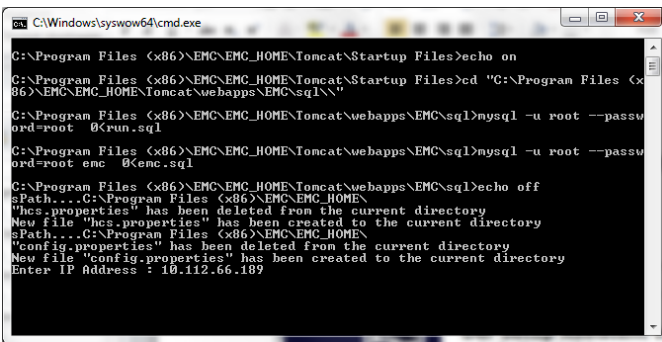
Step 26

After the console shown in the figure below has opened, it will take some time before you will be requested to enter an IPv4 address.



```
C:\Windows\system64\cmd.exe
C:\Program Files (x86)\EMC\EMC_HOME\Tomcat\Startup Files>echo on
C:\Program Files (x86)\EMC\EMC_HOME\Tomcat\Startup Files>cd "C:\Program Files (x86)\EMC\EMC_HOME\Tomcat\webapps\EMC\sql\'
C:\Program Files (x86)\EMC\EMC_HOME\Tomcat\webapps\EMC\sql>mysql -u root --password=root <run.sql
C:\Program Files (x86)\EMC\EMC_HOME\Tomcat\webapps\EMC\sql>mysql -u root --password=root <enc.sql
C:\Program Files (x86)\EMC\EMC_HOME\Tomcat\webapps\EMC\sql>echo off
sPath...C:\Program Files (x86)\EMC\EMC_HOME\
"hcs.properties" has been deleted from the current directory
New file "hcs.properties" has been created to the current directory
sPath...C:\Program Files (x86)\EMC\EMC_HOME\
"config.properties" has been deleted from the current directory
New file "config.properties" has been created to the current directory
Enter IP Address : _
```

- ⇒ Enter the IP address here which has been agreed upon with our project engineering department for your **SMARTCONTROL** and confirm your entry by pressing the Enter button of your PC.



```
C:\Windows\system64\cmd.exe
C:\Program Files (x86)\EMC\EMC_HOME\Tomcat\Startup Files>echo on
C:\Program Files (x86)\EMC\EMC_HOME\Tomcat\Startup Files>cd "C:\Program Files (x86)\EMC\EMC_HOME\Tomcat\webapps\EMC\sql\'
C:\Program Files (x86)\EMC\EMC_HOME\Tomcat\webapps\EMC\sql>mysql -u root --password=root <run.sql
C:\Program Files (x86)\EMC\EMC_HOME\Tomcat\webapps\EMC\sql>mysql -u root --password=root <enc.sql
C:\Program Files (x86)\EMC\EMC_HOME\Tomcat\webapps\EMC\sql>echo off
sPath...C:\Program Files (x86)\EMC\EMC_HOME\
"hcs.properties" has been deleted from the current directory
New file "hcs.properties" has been created to the current directory
sPath...C:\Program Files (x86)\EMC\EMC_HOME\
"config.properties" has been deleted from the current directory
New file "config.properties" has been created to the current directory
Enter IP Address : 10.112.66.189
```

Step 27

The installation is finished as soon as the console window has closed automatically.

- ⇒ Shut down your computer and restart it afterwards.

The Energy Management Control Software (EMC) is now ready for use.

5 Product Support

When you need support, please contact:

GMC-I Messtechnik GmbH

Product Support Hotline

Phone +49 911 8602-500

Telefax +49 911 8602-340

E-Mail customer.project@gossenmetrawatt.com

Edited in Germany • Subject to change without notice • A pdf version is available on the Internet

 **GOSSEN METRAWATT**

GMC-I Messtechnik GmbH
Südwestpark 15
90449 Nürnberg • Germany

Phone +49 911 8602-111
Fax +49 911 8602-777
E-Mail info@gossenmetrawatt.com
www.gossenmetrawatt.com